



Objective

After completing the upgrade of the existing 570L configuration, it can be installed into 590L.

Equipment

590L Digital DC Drive, 570L configuration, and computer with ConfigEd software (> v 5.10) installed.

Procedure

Note: This is a step by step procedure on converting a Link 570-drive configuration to a Link 590-drive configuration, with version 3.1 firmware.

Warning: Before performing this procedure, you should *Export* a copy of the project, that you want to convert, to a floppy disk, in case some problems arise. This way you will always have an original set of Link configurations. See the Manager User Manual (RG352101) for this procedure.

1. You must have *Read/Write* privileges of the project that you want to convert.

Note: Some people may refer to it as “ Having the token “

2. To verify that you have *Read/Write* privileges, open *Manager*



3. Select the correct configurations under Project::Utilities to convert.

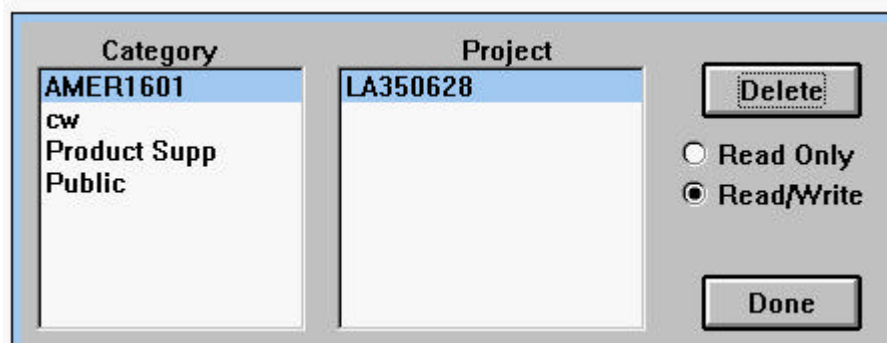
4. Verify the appropriate project from the *Category::Project* and window.

5. Verify that the *Read/Write* window is marked.

Note: The example below displays, the *Category* selected is AMER1601 and the *Project* is LA350628.

6. The *Read/Write* box is marked; therefore this project has *Read/Write* privileges.

Note: If the **Read Only** box is marked, you **DO NOT** have the proper privileges to convert the project. Contact your system designer to obtain the proper privileges.



7. Click the *Done* button to close the window

If you have questions, please call the Product Support Group at (704) 588-3246.

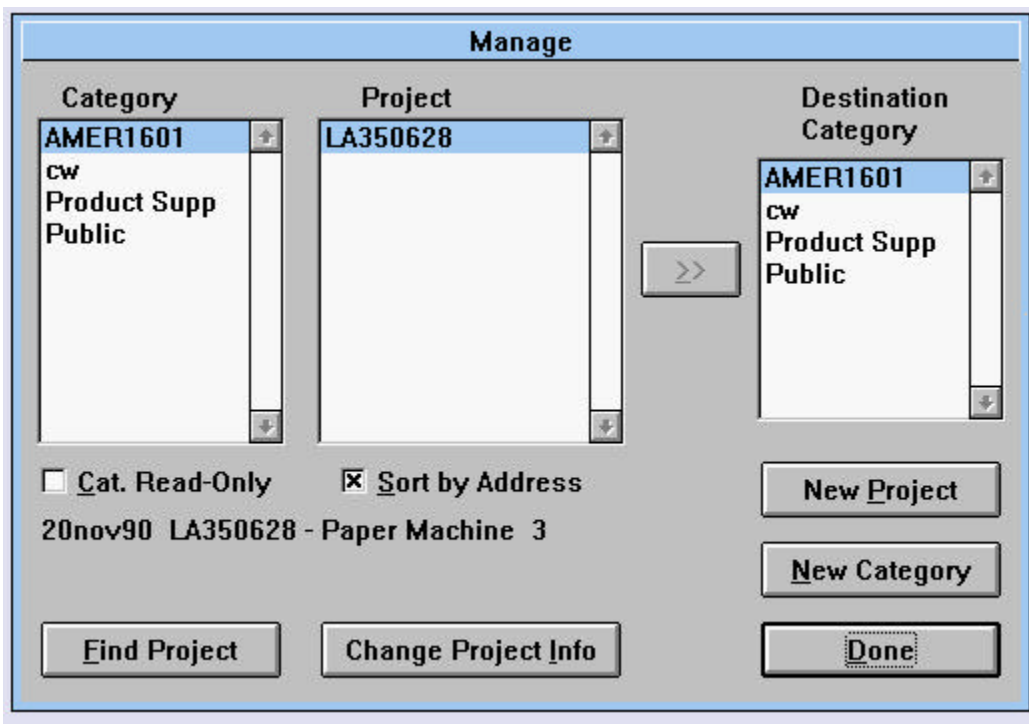
- 8. Close the *Manager* program.
- 9. Open the *ConfigEd* software.



- 10. Go to *Project::Manage*, then double click open.

Note: The *Manage* window will appear as shown below.

- 11. Select the project in the *Category* column that you want to convert.
- 12. Select the project in the *Project* column that you want to convert.
- 13. In the example shown below, the *Category* selected is *AMER1601* and the *Project* selected is *LA350628*.
- 14. Verify that the *Cat.Read-Only* window is not checked.(See the example below)
- 15. If it is checked, click your mouse button on this check to remove it.

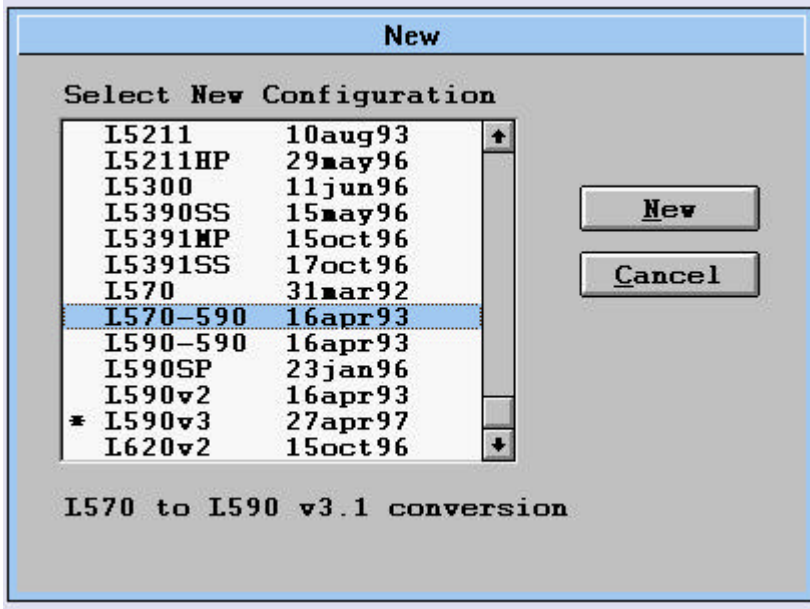


- 16. Click the *Done* button to close the *Manage* window.
- 17. Select the *Project::Document*. Highlight the 570L configurations that are being converted, then select *Document*.

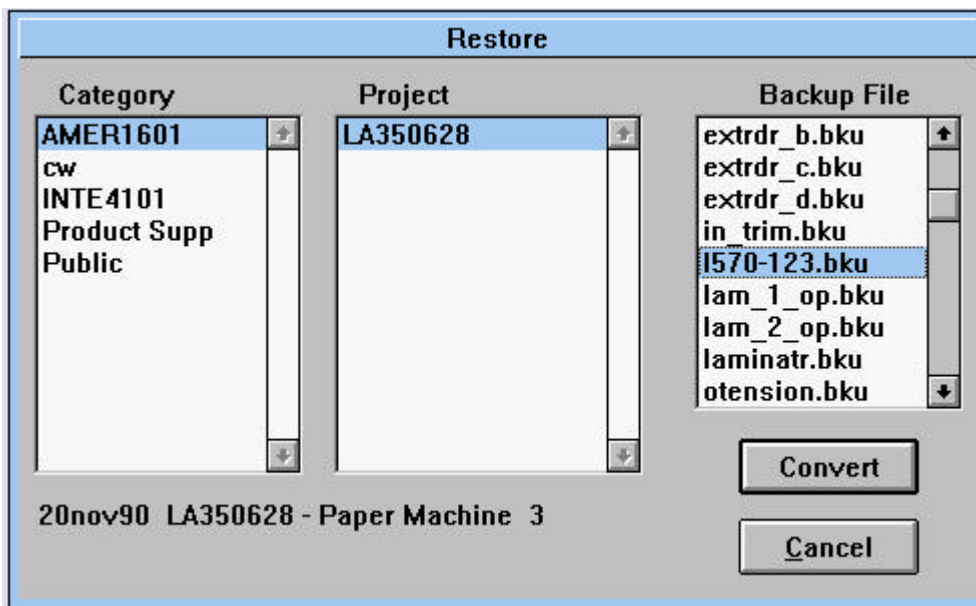
Note: This will document each of the 570-Link modules, parameter data. This file will be called xxxxxxxx.doc, where xxxxxxxx indicates the project number, and is located under the project number under the ConfigEd directory root directory `ssd_link::configs`.

If you have questions, please call the Product Support Group at (704) 588-3246.

- 18. Go to *File::New....*, the *New* window will appear as shown below.
- 19. Select *L570-590* from the list as shown below.
- 20. Click the *New* button, then advance to the *Restore* window as shown below.



- 21. Under the *Restore* window, chose the appropriate *Category:: Project* and the desired *Backup File* to convert, as shown below the *Backup File* selected is *L570-123.bku* from the *Category* AMER0601 and *Project* LA350628.

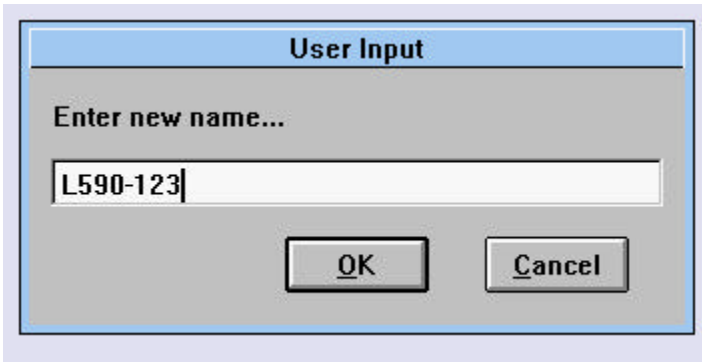


If you have questions, please call the Product Support Group at (704) 588-3246.

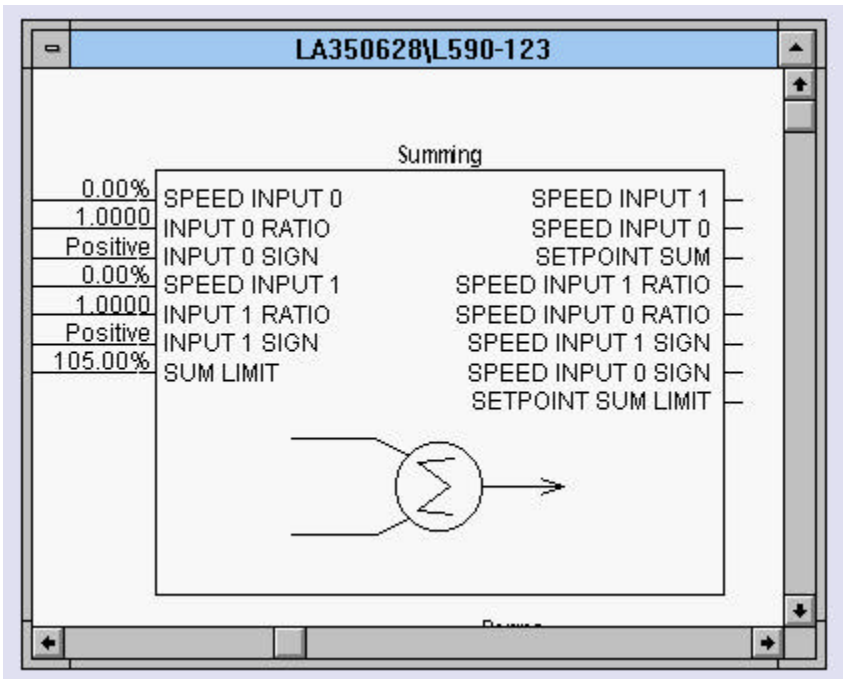
- 22. Click the Convert button to advance to the next step
- 23. A *User Input* window will appear, as shown below. Enter in the new desired name.

Note: In the example below, the old name L570-123 will be renamed to

- 24. *L590-123* will reflect the new hardware change.



- 25. Click the *OK* button.
- 26. The new converted *L590-123* configuration will now appear, as shown below.



- 27. Print the document that was created in step 6 and compare the parameter data to the 590L configurations just created. Make any changes if required.

This configuration can now be installed in the 590L drive.

If you have questions, please call the Product Support Group at (704) 588-3246.