

## Software ConfigEd Lite

ConfigEd Lite is a software tool used to configure stand alone Eurotherm controllers. Using the same graphical user interface as DSD, you create and diagram your configurations in an easy-to-understand format that shows the functionality of your drive.

This off-line tool does not need drive hardware to create your configuration. Once complete simply install it into your drive. In addition, you can retrieve configurations from existing drives to get all settings and modify existing configurations.

ConfigEd Lite requires a Windows™ based computer with at least 4 MB of RAM, 2 MB of hard drive space, 3.5" floppy disk and one serial port for drive communication.

The package contains the complete ConfigEd Lite program with default configurations, product manual, and serial cable.

**ConfigEd Lite DC Application Pack**  
The DC Applications Pack contains advanced configuration templates for control applications. The package includes configurations for current programmed winder, speed programmed winder, and section control.

## Drive System Designer

Drive System Designer (DSD) is a power software tool used to configure Eurotherm LINK drive systems. DSD employs a graphical user interface and drawing tools that allow you to create and diagram your configurations in an easy-to-understand format that represents the functionality of your configuration.

Use basic function blocks to create an unlimited control schemes or use powerful built-in blocks simplify your system design. When troubleshooting the system, the on-line SAM tool speeds diagnostics with access to the entire system on the same graphical configuration template.

DSD requires a Windows™ based computer with at least 4 MB of RAM, 2 MB of hard drive space, 3.5" floppy disk and one serial port for drive communication.

**Auto Configure Option**  
Auto Configure, the most revolutionary design package on the market, makes system design reach a new level of simplicity. In addition to DSD, the graphical interface automatically configures the system based upon real-world user input like section type (Unwind, Nip, etc.).

CREATE, INSTALL, MODIFY & RETRIEVE CONFIGURATIONS

GRAPHICAL INTERFACE

POWERFUL FUNCTION BLOCKS

DRAG AND DROP PROGRAMMING

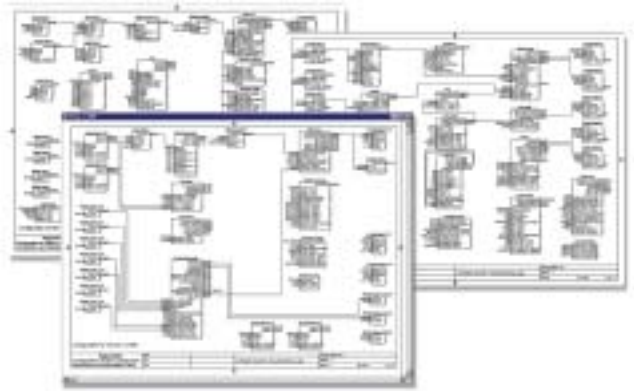
WINDOWS™ BASED PLATFORM

### Ordering Information

Description	Catalog No.
ConfigEd Lite new user	402-NU5
ConfigEd Lite 590 DC application package	402-DC5

### Options

Description	Catalog No.
Serial cable, 25-pin to system port (3 feet)	CM351910
Serial adapter, 25-pin to 9-pin	LA350838



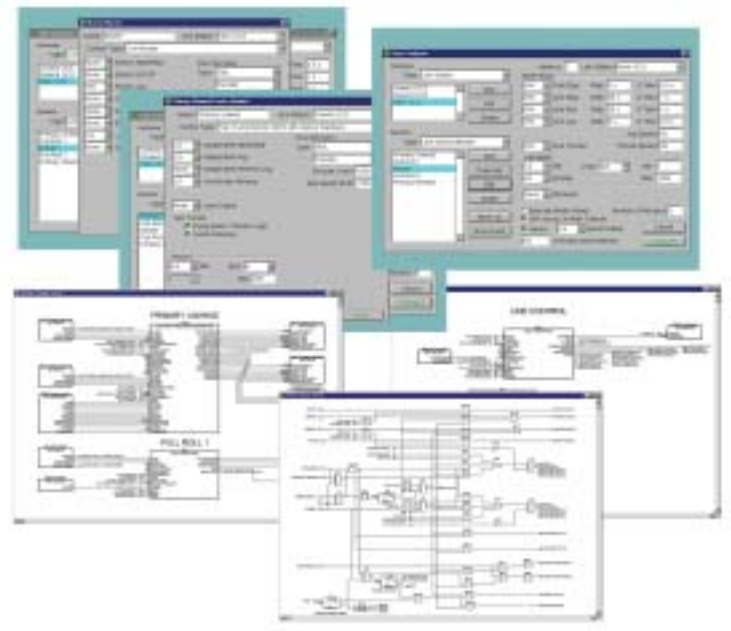
DESIGN OFF-LINE

TROUBLESHOOT ON-LINE

GRAPHICAL INTERFACE

DRAG AND DROP PROGRAMMING

WINDOWS™ BASED PLATFORM



REAL-TIME MONITORING AND TUNING  
 CREATE, INSTALL, MODIFY & RETRIEVE CONFIGURATIONS  
 GRAPHICAL INTERFACE  
 SCOPE FUNCTION  
 DRAG AND DROP PROGRAMMING  
 WINDOWS™ BASED PLATFORM

**NEW** Software

## ConfigEd Lite Plus

ConfigEd Lite Plus is the next generation design and troubleshooting tool for standalone Eurotherm controllers. It includes the off-line configuration tool, ConfigEd Lite, PLUS an on-line tuning and troubleshooting package.

Compatible with our new 590+, 690+ and 650V models, users can start and stop the drive from their PC, set parameters, and monitor performance with the on-line scope. Startup is simplified further by built-in procedures that step the user through setup and tuning.

### GRAPHICAL INTERFACE

With the graphical user interface, you create and diagram your configurations in an easy-to-understand format that shows the functionality of your drive. Default templates display all the drive function blocks and internal signal connections. Users can easily create new custom templates and reuse old designs.

### OFF-LINE TOOL

This off-line tool does not need drive hardware to create your configuration. Once complete simply install it into your drive. In addition, you can retrieve configurations from existing drives to get all settings and modify existing configurations.

### SYSTEM REQUIREMENTS

ConfigEd Lite Plus requires a Windows™based computer with at least 32 MB of RAM, 12 MB of hard drive space, CD-ROM and one serial port for drive communication.

The package contains the complete ConfigEd Lite Plus program with default configurations, product manual, and serial cable.

### Ordering Information

Description	Catalog No.
ConfigEd Lite Plus new user	CEL + NU1

### Options

Description	Catalog No.
Serial cable, 25-pin to system port (3 feet)	CM351910
Serial adapter, 25-pin to 9-pin	LA350838

