

EMC Filters

A range of custom designed optional EMC (ElectroMagnetic Compatibility) filters are available for use with the SSD Drives product range. These have been carefully designed to provide cost effective and easily implemented solutions for a variety of standard installations.

AC and DC Drive Filters Technical Specifications

Product Number	Rating	Filter Part Number	Filter Style Mounting Kit	IP40 Wall	Emission Standard	Max. Cable Length
AC Drive Filters						
650/ 650V (200v)	Frame 1, 2,& 3	Order with Drive	INT	–	B	25m*
650/650V (400v)	Frame 1, 2,& 3	Order with Drive	INT	–	A	25m*
605/690+	Frame A & B	Order with Drive	INT	–	B	25m*
Filters for ONLY Grounded Neutral (TN) AC supplies up to 460V						
650V/690+	Frame C	CO465513U036	FP	BA465514U036	B	50m
650V/690+	Frame D	CO465513U070	FP	BA465514U070	B	50m
650V/690+	Frame E	CO465513U105	FP	BA465514U105	B	50m
650V/690+	Frame F	CO465513U215	FP	–	B	50m
Filters for Grounded Neutral (TN) or Ungrounded (IT) AC supplies up to 480V						
650V/690+	Frame C	CO465515U036	FP	BA465514U036	A	50m
650V/690+	Frame D	CO465515U070	FP	BA465514U070	A	50m
650V/690+	Frame E	CO465515U105	FP	BA465514U105	A	50m
650V/690+	Frame F	CO465515U215	FP	–	A	50m
690+	Frame G	CO464517	MOD	–	A	300m
690+	Frame H	CO464517 (2X)	MOD	–	A	300m
690+	Frame J	CO464517 (2X)	MOD	–	A	300m
DC Drive Filters						
506/507/508	3,6,12A	CO389115	FP	-	B	50m
512C/ 514C	4,8,16A	CO389113	FP	-	B	50m
512C/ 514C	32A	CO389114	FP	-	B	50m
590+/955+	15A	CO466516U015	MOD	-	A	50m
590+/955+	35,40A	CO466516U040	MOD	-	A	50m
590+/955+	70A	CO466534U070	MOD	-	A	50m
590+/955+	110A	CO466534U110	MOD	-	A	50m
590+/955+	165A	CO466534U165	MOD	-	A	50m
590+/955+	180A	CO388965U180	MOD	-	A	50m
590+/955+	270, 360A	CO389456	MOD	-	A	50m
590+/955+	450A	CO389456 (2X)	MOD	-	A	50m
590+/955+	720, 800A	CO389456 (3X)	MOD	-	A	50m

* External filters available for cable runs longer than those specified

Please refer to your local SSD Drives sales office for details of EMC filters > 800A

The 590+ filters must be used in conjunction with the appropriate 2% impedance ac line choke (see page 22)

INT = Internal Filter, factory installed within the drive module.

FP = Space saving Footprint Filter that fits behind the drive.

MOD = Module filter that must be mounted adjacent to the drive.

Emission Standard A = EN55011 Class A (Industrial EMC environment of EN50081-2)

Emission Standard B = EN55011 Class B (Residential, commercial and light industrial EMC environment of EN50081-1)

SIMPLE INSTALLATION

TRANSMIT 196 FEET (60 METERS)

ELECTRICALLY NOISE IMMUNE

Ordering Information

Description	Catalog No.
Composite fiber optic cable 165 ft (50m) acrylic	CM059748U050
Composite fiber optic cable 660 ft (200m) acrylic	CM059748U200
Composite fiber optic cable 1650 ft (500m) acrylic	CM059748U500

Description	Catalog No.
Duplex fiber optic cable 99 ft (30m) acrylic	CM352278U030
Duplex fiber optic cable 495 ft (150m) acrylic	CM352278U152
Duplex fiber optic cable 990 ft (300m) acrylic	CM352278U305

Description	Catalog No.
Single fiber optic cable 99 ft (30m) acrylic	CM056316U030
Single fiber optic cable 495 ft (150m) acrylic	CM056316U152
Single fiber optic cable 1000 ft (305m) acrylic	CM056316U305

Ordering Information

Description	Catalog No.
Black fiber optic connector	C1055070
Red fiber optic connector	C1055069
Cutter kit f/acrylic fiber optic cable	LA385204

UL APPROVED OPTIC FIBER CABLE-RISER

5000 FEET TRANSMISSION DISTANCE

MHZ-KM BANDWIDTH

Ordering Information

Description	Catalog No.
Cable assembly 82 ft (25m)	CM352692U251
Cable assembly 165 ft (50m)	CM352692U501
Cable assembly 247 ft (75m)	CM352692U751
Cable assembly 330 ft (100m)	CM352692U102
Cable assembly 495 ft (150m)	CM352692U152
Cable assembly 660 ft (200m)	CM352692U202
Cable assembly 825 ft (250m)	CM352692U252
Cable assembly 990 ft (300m)	CM352692U302
Cable assembly 1320 ft (400m)	CM352692U402
Cable assembly 1650 ft (500m)	CM352692U502
Cable assembly 3300 ft (1000m)	CM352692U103
Glass Termination Kit	JA352597
Glass ST Connector	CI352599
Cable Anchor (spares for assembling CI351599)	CI352673
Crimp Sleeve (spares for assembling CI351599)	CI352674

Fiber Optic Accessories

Plastic Fiber Optic Cable

SSD Drives flexible acrylic fiber optic cable has a minimum bending radius of 1.5 inches. Terminations are made simply by snapping together the two parts of the plastic fiber optic connectors with a pair of pliers (no special tools are required). The connectors are color-coded: Transmit - red; Receive - black.

Composite Fiber Optic Cable

Composite fiber optic cable combines a single strand of acrylic fiber optic cable and two copper wire cables. It is used in applications where repeater modules are needed. The composite cable carries the fiber optic signal and a 24V supply to the repeater module.

Duplex Fiber Optic Cable

Duplex fiber optic cable consists of two parallel strands of acrylic cable bonded together. It is often used when remote modules are installed in a system; for example, in an operator station.

Single Strand Fiber Optic Cable

Single strand acrylic fiber optic cable is used inside drive enclosures.

Glass Fiber Optic Cable

These components are used with the acrylic fiber optic cable.

The flexible glass fiber optic cable ships with one standard ST style connector installed. Glass fiber optic cable is used for sending data over long distances. Glass cable is recommended in cases where distances exceed 328 feet (100 meters) or installed through high temperature areas.

Ordering Information

Order one connector with each cable assembly. Additional cable anchors (CI352673) and crimp sleeves (CI352674) are often required when assembling ST connectors.

Note: Glass Termination Kit (JA352597) is needed to assemble the connectors for the glass fiber optic cable.

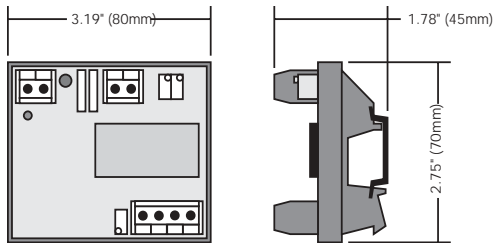
General Accessories Signal Isolators

These isolators are DIN rail mounted devices that provide electrical isolation between its input and output circuitry.

Input can be from 10mV to 100V or 1mA to 100mA. Output can either be voltage (0-5V, 0-10V, $\pm 5V$ or $\pm 10V$) or current (0-1mA, 0-20mA, or 4-20mA).

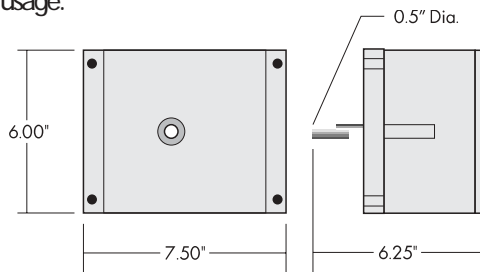
5530 Loadcell Amplifier

The 5530 loadcell amplifier scales the high level output signal from a strain gauge or LVDT loadcells for use as tension indication or as a feedback signal for material tension control. The force created by tension in the web is converted into a DC voltage that is proportional to web tension and the supply voltage.



Non-Contact Dancer Position Potentiometer

This potentiometer provides 0 to 10 volt dancer position feedback. It is designed to be mounted on the machine to provide material take-up control. The design eliminates dead spots common after extended usage.



L5231 Fiber Optic Light Meter

The L5231 measures light levels in both plastic and glass fiber optic cable. This meter is invaluable during start-up to ensure trouble-free communications

PROVIDES A FULLY ISOLATED DC OUTPUT IN PROPORTION TO A DC INPUT

EASY FIELD CONFIGURABLE INPUT AND OUTPUT RANGES

ULTRA SLIM 12.6MM (0.5") HOUSING MOUNTS ON DIN RAIL FOR HIGH DENSITY INSTALLATION

Ordering Information

Description	Catalog No.
Universal Input/Voltage output	LA470509
Universal Input/Current output	LA470554

-10 TO +10 VDC OUTPUT

OFFSET AND SPAN FOR CALIBRATION

EXCITE POTENTIOMETER FOR SCALING THE LOADCELL SUPPLY VOLTAGE

ADJUSTABLE BANDWIDTH AND FILTER

DIN RAIL MOUNTABLE AND WIRED TO CUSTOMER TERMINALS

Ordering Information

Description	Catalog No.
Amplifier for LVDT load cell	5530/1
Amplifier for strain gauge load cell	5530/2

NEMA 4 CONSTRUCTION

300 DEGREE TRAVEL

HEAVY DUTY TERMINALS

Ordering Information

Description	Catalog No.
Dancer position non-contact potentiometer	DD353481
Dancer position non-contact potentiometer with limit switches	DD353482

STURDY, HAND-HELD DESIGN

CONTAINS PLASTIC AND GLASS CABLE ADAPTERS

Ordering Information

Description	Catalog No.
Light Meter	L5231
Light Meter Instructions	HW351772
T&B Adapter for Light Meter	JB470146
ST Adapter for Light Meter	JB352598

16-BIT REFERENCE SIGNAL

CONFIGURATION FOR MASTER/SLAVE OPERATION

FULLY CONFIGURABLE INPUT AND OUTPUT SIGNALS

ADDITIONAL FIBER OPTIC TRANSMITTER

DIN RAIL MOUNTABLE

Ordering Information	
Description	Catalog No.
RS-232 peer-to-peer comms	5703/1

STANDARD QUARTER DIN SQUARE CUTOUT

SINGLE QUADRANT AND CIRCULAR SCALE VERSIONS

Ordering Information	
Description	Catalog No.
Analog load meter (0 -150%)	5507/1/1/L1
Analog load meter (150-0-150%)-Center zero	5507/1/2/L2
Analog load meter (150-0-150%)-Circular scale	5507/1/3/L2
Analog speed meter (0-100%)	5507/1/1/S1
Analog tension meter (0-100%)	5507/1/1/T1
Quadrant Meter, uncalibrated	5507/1/1
Quadrant Meter with Center Zero, uncalibrated	5507/1/2
Circular scale Meter, uncalibrated	5507/1/3

DIGIT DISPLAY TO 1999 ±0.05% FS ACCURACY

3 POSITION DECIMAL POINT

±5V TO ±400V DC INPUT

RATIOMETRIC DISPLAY OF 2 ANALOG SIGNALS

LAST DIGIT FLICKER INHIBIT

90-130V OR 180-260V AC SUPPLY

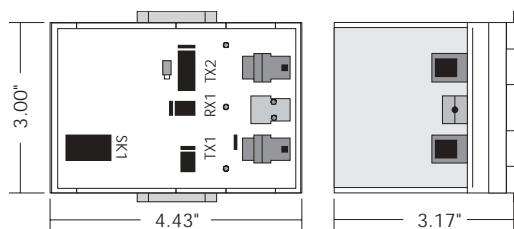
CE MARKED TO EN61010 (1994)

Ordering Information	
Description	Catalog No.
5512 Digital Panel Meter	DA054339

General Accessories

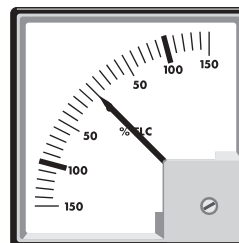
5703 Peer-to-Peer Communications Module

The 5703 allows peer-to-peer communication between 590+ or 690+ controllers over a fiber optic cable. It can access any readable 590+ or 690+ Series controller parameter, including speed, current and feedback signals. It allows users to implement extremely accurate draw or ratio schemes. One 5703 is required per drive when digital master or follower capability is required.



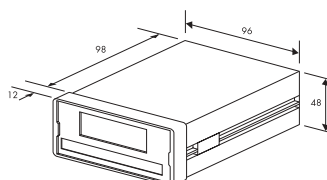
5507 Analog Panel Meters

5507 meters provide NEMA 1 protection when mounted in an enclosure. They connect directly to the analog outputs on drives for speed or load indication.



Digital Panel Meter Type 5512

The extremely versatile 5512 Digital panel meter is ideal for a wide range of signal display applications. Front access multi turn scaling, offset potentiometers and slide in custom legend guarantee minimum set up time.



Accessories

DC Drive/Motor Packages 1 to 1000 Hp

TECHNICAL SPECIFICATION

See the 590+ section for drive specifications.

Ambient – 0-40°C (32-104°F)

Altitude – 1000m (3300 ft.) ASL

Insulation – Class F

Overload – 150 percent for 60 seconds

DC Drive/Motor packages include a matched 590+ DRV and DC motor. Optional C-face mounting and conduit box location selections assure the package meets your physical requirements. Speed feedback options let you meet any performance demand.

The high efficiency, shunt wound DC motor is especially designed for use with variable speed DC drives. These standard motors are fully guarded for safe operation. Forced ventilation assures reliable performance over the entire speed range. Just add a blower motor starter and your design is complete.

In addition, this package provides an additional discount over the price of separately ordered parts.



PREMIUM QUALITY AND VALUE

PERFORMANCE-MATCHED COMBINATION

SINGLE-SOURCE SHOPPING FOR YOUR CUSTOMER

BEST DC DRIVE MOTOR IN THE INDUSTRY

ADDITIONAL DISCOUNT ON MOTOR/DRIVE COMBINATION

COMPACT SQUARE FRAME DESIGN

500 VDC 1750 RPM Base Speed

HP	Part Number	Encl	Frame	Max RPM
1	955 + 8R0001M	DPFG-FV	C1811ATZ	2300
2*	955 + 8R0002M	DPFG-FV	C1811ATZ	2300
3*	955 + 8R0003M	DPFG-FV	C1811ATZ	2300
5*	955 + 8R0004M	DPFG-FV	C1811ATZ	2300
7.5*	955 + 8R0007M	DPFG-FV	C1811ATZ	2300
10*	955 + 8R0010M	DPFG-FV	C1811ATZ	2300
15*	955 + 8R0015M	DPFG-FV	SC2113ATZ	2300
20*	955 + 8R0020M	DPFG-FV	SC2113ATZ	2300
25*	955 + 8R0025M	DPFG-FV	MC2113ATZ	2300
30*	955 + 8R0030M	DPFG-FV	LC2113ATZ	2300
40*	955 + 8R0040M	DPFG-FV	MC2115ATZ	2100
50*	955 + 8R0050M	DPFG-FV	LC2115ATZ	2100
60*	955 + 8R0060M	DPFG-FV	LC2512ATZ	2100
75*	955 + 8R0075M	DPFG-FV	C2514ATZ	2100
100*	955 + 8R0100M	DPFG-FV	C2515ATZ	2100
125*	955 + 8R0125M	DPFG-FV	C2813ATZ	2100
150*	955 + 8R0150M	DPFG-FV	C2815ATZ	2100
200*	955 + 8R0200M	DPFG-FV	C3214ATZ	2100
250	955 + 8R0250M	DPFG-FV	LC3612ATZ	2100
300*	955 + 8R0300M	DPFG-FV	LC3612ATZ	2100
400*	955 + 8R0400M	DPFG-FV	MC4013ATZ	2100
500*	955 + 8R0500M	DPFG-FV	C4412ATZ	2050
600	955 + 8R0600M	DPFG-FV	B587ATZ	1900
700	955 + 8R0700M	DPFG-FV	BB587ATZ	1900
800	955 + 8R0800M	DPFG-FV	B685ATZ	1925

500 VDC 1150 RPM Base Speed

HP	Part Number	Encl	Frame	Max RPM
1	955 + 8R0001L	DPFG-FV	C1811ATZ	2000
2	955 + 8R0002L	DPFG-FV	C1811ATZ	2000
3	955 + 8R0003L	DPFG-FV	C1811ATZ	1900
5	955 + 8R0004L	DPFG-FV	C1811ATZ	1900
7.5	955 + 8R0007L	DPFG-FV	C1812ATZ	2300
10	955 + 8R0010L	DPFG-FV	SC2113ATZ	2300
15	955 + 8R0015L	DPFG-FV	MC2113ATZ	2100
20	955 + 8R0020L	DPFG-FV	LC2113ATZ	2000
25	955 + 8R0025L	DPFG-FV	LC2115ATZ	2000
30*	955 + 8R0030L	DPFG-FV	LC2115ATZ	2300
40*	955 + 8R0040L	DPFG-FV	L2512ATZ	2000
50*	955 + 8R0050L	DPFG-FV	C2514ATZ	2000
60*	955 + 8R0060L	DPFG-FV	C2515ATZ	2000
75*	955 + 8R0075L	DPFG-FV	C2815ATZ	2000
100*	955 + 8R0100L	DPFG-FV	C2815ATZ	1850
125*	955 + 8R0125L	DPFG-FV	C3214ATZ	2000
150*	955 + 8R0150L	DPFG-FV	LC3612ATZ	2000
200*	955 + 8R0200L	DPFG-FV	C37613ATZ	2000
250*	955 + 8R0250L	DPFG-FV	MC4013ATZ	2000
300*	955 + 8R0300L	DPFG-FV	LC4013ATZ	2000
400*	955 + 8R0400L	DPFG-FV	C4413ATZ	1600
500*	955 + 8R0500L	DPFG-FV	C4414ATZ	1680
600	955 + 8R0600L	DPFG-FV	B589ATZ	1650
700	955 + 8R0700L	DPFG-FV	BB5810ATZ	1500
800	955 + 8R0800L	DPFG-FV	B687ATZ	1350
900	955 + 8R0900L	DPFG-FV	B842AT	1350
1000	955 + 8R1000L	DPFG-FV	B842AT	1200

240 VDC 1750 RPM Base Speed

HP	Part Number	Encl	Frame	Max RPM
1	955 + 4R0001M	DPFG-FV	DC189ATZ	2300
2	955 + 4R0002M	DPFG-FV	DC189ATZ	2300
3*	955 + 4R0003M	DPFG-FV	DC189ATZ	2300
5*	955 + 4R0004M	DPFG-FV	C1811ATZ	2300
7.5*	955 + 4R0007M	DPFG-FV	C1811ATZ	2300
10*	955 + 4R0010M	DPFG-FV	C1812ATZ	2300
15*	955 + 4R0015M	DPFG-FV	SC2113ATZ	2300
20*	955 + 4R0020M	DPFG-FV	SC2113ATZ	2300
25*	955 + 4R0025M	DPFG-FV	MC2113ATZ	2300
30*	955 + 4R0030M	DPFG-FV	LC2113ATZ	2300
40*	955 + 4R0040M	DPFG-FV	LC2115ATZ	2300
50	955 + 4R0050M	DPFG-FV	MC2512ATZ	2300
60	955 + 4R0060M	DPFG-FV	LC2512ATZ	2000
75	955 + 4R0075M	DPFG-FV	MC2812ATZ	2000
100	955 + 4R0100M	DPFG-FV	LC2812ATZ	2000
125	955 + 4R0125M	DPFG-FV	LLC3212ATZ	2000

240 VDC 1150 RPM Base Speed

HP	Part Number	Encl	Frame	Max RPM
1	955 + 4R0001L	DPFG-FV	DC189ATZ	2000
2	955 + 4R0002L	DPFG-FV	DC189ATZ	2000
3	955 + 4R0003L	DPFG-FV	DC189ATZ	2000
5	955 + 4R0004L	DPFG-FV	C1811ATZ	2000
7.5	955 + 4R0007L	DPFG-FV	C1812ATZ	2000
10	955 + 4R0010L	DPFG-FV	SC2113ATZ	2000
15	955 + 4R0015L	DPFG-FV	MC2113ATZ	2000
20	955 + 4R0020L	DPFG-FV	LC2113ATZ	2000
25	955 + 4R0025L	DPFG-FV	LC2115ATZ	2000
30	955 + 4R0030L	DPFG-FV	LC2115ATZ	2000
40	955 + 4R0040L	DPFG-FV	LC2512ATZ	2000
50	955 + 4R0050L	DPFG-FV	C2514ATZ	2000
60	955 + 4R0060L	DPFG-FV	C2515ATZ	2000
75	955 + 4R0075L	DPFG-FV	C3813ATZ	2000
100	955 + 4R0100L	DPFG-FV	LLC3212ATZ	2000
125	955 + 4R0125L	DPFG-FV	LC3214ATZ	2000
150	955 + 4R0150L	DPFG-FV	LC3513ATZ	2000
200	955 + 4R0200L	DPFG-FV	C4011ATZ	2000

* Note: Packages normally available from stock.
 Replace the 'R' with 'N' for non-regenerative drive.

MOTOR OPTIONS

Conduit Box Location Option - The default conduit box location is F1. This is included in the package part number. To specify an F2 location, add a '-2' suffix to the part number.

C-Face Option - To add a C-face bracket to the motor, add a '-C' suffix to the part number. (frames from DC180ATZ to C360ATZ only).

Feedback Option - This option includes the feedback device, interface card, coupling, adaptor and mounting. Select only one feedback option per package.

The **encoder** option is a 5 to 15 VDC, 1024 PPR encoder; add a -E1 suffix to the package part number.

The **tachometer** option is a 50 volts per 1000 RPM tachometer rated to 5000 RPM maximum; add a -DT suffix to the package part number.

Example—Choose 955 + 8R0050M-2C-E1 for a 50 Hp, 500 VDC Regenerative drive and 1750 RPM base speed motor with a F2 conduit box, C-FACE option, and a 1024 encoder and encoder feedback card.

Isolation Transformers

Drive isolation transformers are designed to operate with SCR controlled drives. They can withstand SCR duty cycles and isolate the power source from SCR noise. The inherent impedance the transformer provides benefits the SCR controller and limits the rate of rise of transient currents.

- UL listing
- Design to applicable NEMA, ANSI, and IEEE standards
- Dry-type, Class AA, ventilated NEMA 2 enclosure for indoor use
- Floor mounting (optional wall mounting brackets up to 51 kVA)
- 60 Hertz, three-phase design

Ordering Information

All transformer modifications must be specified at time of order. They are not field installable.

MODIFICATIONS

SSD Drives offers several modifications to customize the isolation transformers to your application.

Ordering Information

See the transformer modifications section when $\pm 2.5\%$ taps, special voltages, or 50 Hertz are required.

Additional $\pm 2.5\%$ taps

$\pm 2.5\%$ taps are installed on the high-voltage winding to correct for high/low voltage supplies.

50 Hertz Option

The transformers listed are designed for only 60 Hertz supplies. Select this option when using a 50 Hertz supply.

230:230 Three-phase Isolation Transformers

Hp	kVA	Description	Catalog No.
5	7.5	Isolation transformer	202-4451
7.5	11	Isolation transformer	202-44751
10	14	Isolation transformer	202-4412
15	20	Isolation transformer	202-44152
20	27	Isolation transformer	202-4422
25	34	Isolation transformer	202-44252
30	40	Isolation transformer	202-4432
40	51	Isolation transformer	202-4442
50	63	Isolation transformer	202-4452
60	75	Isolation transformer	202-4462
75	93	Isolation transformer	202-44752
100	118	Isolation transformer	202-4413

460:230 Three-phase Isolation Transformers

Hp	kVA	Description	Catalog No.
5	7.5	Isolation transformer	202-8451
7.5	11	Isolation transformer	202-84751
10	14	Isolation transformer	202-8412
15	20	Isolation transformer	202-84152
20	27	Isolation transformer	202-8422
25	34	Isolation transformer	202-84252
30	40	Isolation transformer	202-8432
40	51	Isolation transformer	202-8442
50	63	Isolation transformer	202-8452
60	75	Isolation transformer	202-8462
75	93	Isolation transformer	202-84752
100	118	Isolation transformer	202-8413

230:460 Three-phase Isolation Transformers

Hp	kVA	Description	Catalog No.
5	7.5	Isolation transformer	202-4851
7.5	11	Isolation transformer	202-48751
10	14	Isolation transformer	202-4812
15	20	Isolation transformer	202-48152
20	27	Isolation transformer	202-4822
25	34	Isolation transformer	202-48252
30	40	Isolation transformer	202-4832
40	51	Isolation transformer	202-4842
50	63	Isolation transformer	202-4852
60	75	Isolation transformer	202-4862
75	93	Isolation transformer	202-48752
100	118	Isolation transformer	202-4813
125	145	Isolation transformer	202-481253
150	175	Isolation transformer	202-48153
200	220	Isolation transformer	202-4823
250	275	Isolation transformer	202-48253
300	330	Isolation transformer	202-4833
400	440	Isolation transformer	202-4843
500	550	Isolation transformer	202-4853
600	660	Isolation transformer	202-4863
700	750	Isolation transformer	202-4873
800	870	Isolation transformer	202-4883
900	1000	Isolation transformer	202-4893
1000	1100	Isolation transformer	202-4814

460:460 Three-phase Isolation Transformers

Hp	kVA	Description	Catalog No.
5	7.5	Isolation transformer	202-8851
7.5	11	Isolation transformer	202-88751
10	14	Isolation transformer	202-8812
15	20	Isolation transformer	202-88152
20	27	Isolation transformer	202-8822
25	34	Isolation transformer	202-88252
30	40	Isolation transformer	202-8832
40	51	Isolation transformer	202-8842
50	63	Isolation transformer	202-8852
60	75	Isolation transformer	202-8862
75	93	Isolation transformer	202-88752
100	118	Isolation transformer	202-8813
125	145	Isolation transformer	202-881253
150	175	Isolation transformer	202-88153
200	220	Isolation transformer	202-8823
250	275	Isolation transformer	202-88253
300	330	Isolation transformer	202-8833
400	440	Isolation transformer	202-8843
500	550	Isolation transformer	202-8853
600	660	Isolation transformer	202-8863
700	750	Isolation transformer	202-8873
800	870	Isolation transformer	202-8883
900	1000	Isolation transformer	202-8893
1000	1100	Isolation transformer	202-8814

Special Primary or Secondary Voltage

Select this option when you require special primary or secondary voltages for your applications.

Surface Mounted Thermal Switch

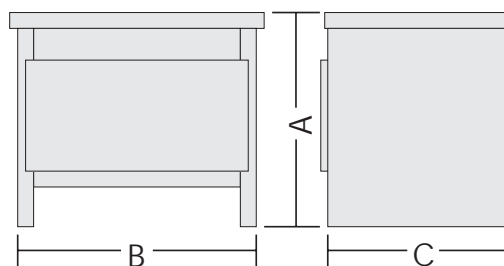
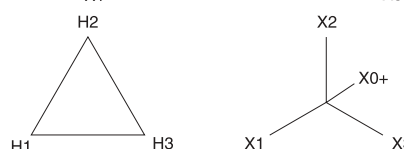
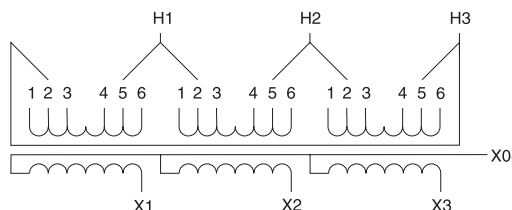
This option provides a normally-closed contact for sensing transformer coil over-temperature. One switch is mounted in each winding.

Isolation Transformers

Application Notes

SSD Drives recommends grounding the neutral of the Y-side (secondary side of the transformer.) By grounding the neutral point, the phase voltage will remain equal from phase-to-phase and phase-to-ground. Having balanced voltage levels will further protect drive components.

Ensure that all loads (especially single-phase loads) on three-phase transformers are balanced. Each leg of the transformer can carry one third of the full transformer rating. Divide any single-phase loads equally among each leg.



575:230 Three-phase Isolation Transformers

Hp	kVA	Description	Catalog No.
5	7.5	Isolation transformer	202-9451
7.5	11	Isolation transformer	202-94751
10	14	Isolation transformer	202-9412
15	20	Isolation transformer	202-94152
20	27	Isolation transformer	202-9422
25	34	Isolation transformer	202-94252
30	40	Isolation transformer	202-9432
40	51	Isolation transformer	202-9442
50	63	Isolation transformer	202-9452
60	75	Isolation transformer	202-9462
75	93	Isolation transformer	202-94752
100	118	Isolation transformer	202-9413

575:460 Three-phase Isolation Transformers

Hp	kVA	Description	Catalog No.
5	7.5	Isolation transformer	202-8851
7.5	11	Isolation transformer	202-88751
10	14	Isolation transformer	202-8812
15	20	Isolation transformer	202-88152
20	27	Isolation transformer	202-8822
25	34	Isolation transformer	202-88252
30	40	Isolation transformer	202-8832
40	51	Isolation transformer	202-8842
50	63	Isolation transformer	202-8852
60	75	Isolation transformer	202-8862
75	93	Isolation transformer	202-88752
100	118	Isolation transformer	202-8813
125	145	Isolation transformer	202-881253
150	175	Isolation transformer	202-88153
200	220	Isolation transformer	202-8823
250	275	Isolation transformer	202-88253
300	330	Isolation transformer	202-8833
400	440	Isolation transformer	202-8843
500	550	Isolation transformer	202-8853
600	660	Isolation transformer	202-8863
700	750	Isolation transformer	202-8873
800	870	Isolation transformer	202-8883
900	1000	Isolation transformer	202-8893
1000	1100	Isolation transformer	202-8814

Dimensions

kVA	Weight (lbs.)	A	B	C
7.5	145 (66)	29 (737)	17.13 (435)	19.38 (492)
11	165 (75)	29 (737)	17.13 (435)	19.38 (492)
15	185 (84)	29 (737)	17.13 (435)	19.38 (492)
20	285 (130)	34 (864)	22.38 (568)	19.88 (505)
27	315 (143)	34 (864)	22.38 (568)	19.88 (505)
34	320 (145)	34 (864)	22.38 (568)	19.88 (505)
40	345 (157)	34 (864)	22.38 (568)	19.88 (505)
51	400 (182)	34 (864)	22.38 (568)	19.88 (505)
63	480 (218)	34.5 (876)	27.88 (708)	14.25 (362)
75	495 (225)	34.5 (876)	27.88 (708)	14.25 (362)
93	600 (273)	40.5 (1029)	30.88 (784)	15.50 (394)
118	755 (343)	46 (1168)	34.38 (873)	16.50 (419)
145	810 (368)	46 (1168)	34.38 (873)	16.50 (419)
175	1030 (468)	50 (1270)	39.88 (1013)	19.75 (502)
220	1090 (495)	50 (1270)	39.88 (1013)	19.75 (502)
275	1450 (659)	55.25 (1403)	44.38 (1127)	27.25 (692)
330	1720 (782)	60.5 (1537)	50.38 (1280)	34.25 (870)
440	2085 (948)	60.5 (1537)	50.38 (1280)	34.25 (870)
550	2750 (1250)	72 (1829)	53.38 (1356)	44.38 (1127)
660	3100 (1409)	72 (1829)	53.38 (1356)	44.38 (1127)
750	3150 (1432)	72 (1829)	53.38 (1356)	44.38 (1127)

All dimensions are in inches (mm) and weights are in Lb.(Kg).